

estate agents **auctioneers**



GFF, 32 Oakfield Road, Clifton, Bristol, BS8 2AT
£395,000

A handsome hall floor period conversion situated in the heart of Clifton. No Onward Chain.

- Hall Floor Conversion
- Ideal location
- Vacant Possession
- Period Details
- Seperate Kitchen
- Gas Central Heating
- Shared Parking
- No Onward Chain

The Property

This spacious and characterful apartment occupies a prime position just moments from Whiteladies Road, Clifton Down shopping centre, the Lido, and Bristol city centre.

The bright and well-appointed accommodation briefly comprises two double bedrooms, a stylish bathroom, a grand reception room, and a separate modern kitchen.

The reception room exudes elegance, featuring impressive proportions, period detailing including tall ceilings, a dado rail, a large sash window, and stunning cast iron fireplace. The adjacent contemporary kitchen is fitted with sleek gloss wall and base units, striking black stone worktops, and integrated appliances including an electric oven and hob, extractor fan and microwave.

The principal bedroom showcases beautiful character features and benefits from an abundance of natural light through the dual-aspect sash windows with working wooden shutters. The second bedroom, also a spacious double, enjoys similar period charm with its traditional sash window and shutters and has the benefit of a large fitted wardrobe.

Completing the property is a modern, fully tiled bathroom featuring a white three-piece suite, including WC, pedestal basin, and a bath with an overhead shower.

Location - Clifton

Clifton and the surrounding areas, with its Victorian and Georgian architecture, are amongst the most sought after locations in the City. The area offers charm alongside excellent amenities with independent shops, boutiques, cafes, bars and restaurants to be found on both Whiteladies Road and Clifton Village including Clifton Down shopping Centre. The Downs offers four hundred acres of green public space whilst Brunel's Clifton Suspension Bridge provides a gateway to the Ashton Court Estate with its woodlands, mountain bike trails and walks whilst there is excellent access to the exciting Harbourside district, the City Centre and Temple Meads.

Other Information

Leasehold - Share of Freehold: 999 from 1st April 1984 958

Management Fee: £125 pcm

Council Tax Band: B

Please Note

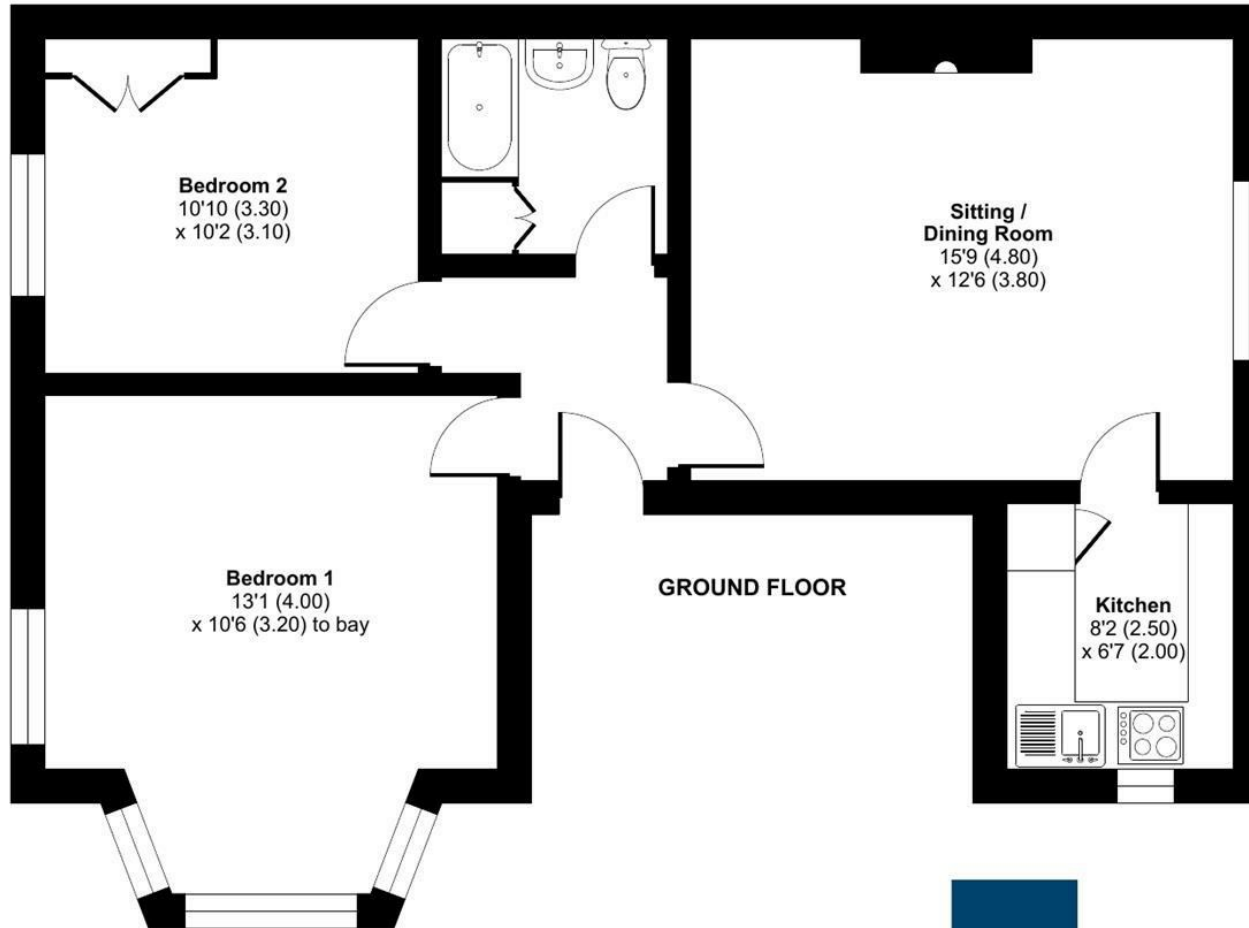
Hollis Morgan endeavour to make our sales details clear, accurate and reliable in line with the Consumer Protection from Unfair Trading Regulations 2008 but they should not be relied on as statements or representations of fact and they do not constitute any part of an offer or contract. All Hollis Morgan references to planning, tenants, boundaries, potential development, tenure etc is to be superseded by the information provided in your solicitors enquiries. It should not be assumed that this property has all the necessary Planning, Building Regulation or other consents. Any services, appliances and heating system(s) listed may not been checked or tested and you should rely on your own investigations. The seller does not make any representation or give any warranty in relation to the property and we have no authority to do so on behalf of the seller. Please note that in some instances the photographs may have been taken using a wide angle lens.



Oakfield Road, Clifton, Bristol, BS8

Approximate Area = 631 sq ft / 58.6 sq m

For identification only - Not to scale



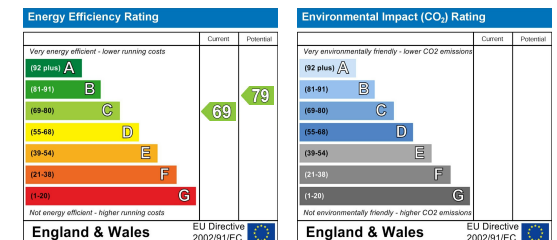
Floor plan produced in accordance with RICS Property Measurement 2nd Edition, Incorporating International Property Measurement Standards (IPMS2 Residential). © nTchecom 2025. Produced for Hollis Morgan. REF:1315941



TEL | 0117 933 9522 | 9 Waterloo Street, Clifton, Bristol BS8 4BT

www.hollismorgan.co.uk | post@hollismorgan.co.uk

Hollis Morgan Property Limited, registered in England, registered no 7275716
Registered address, 5 Upper Belgrave Road, Clifton, Bristol BS8 2XQ



hollis
morgan
